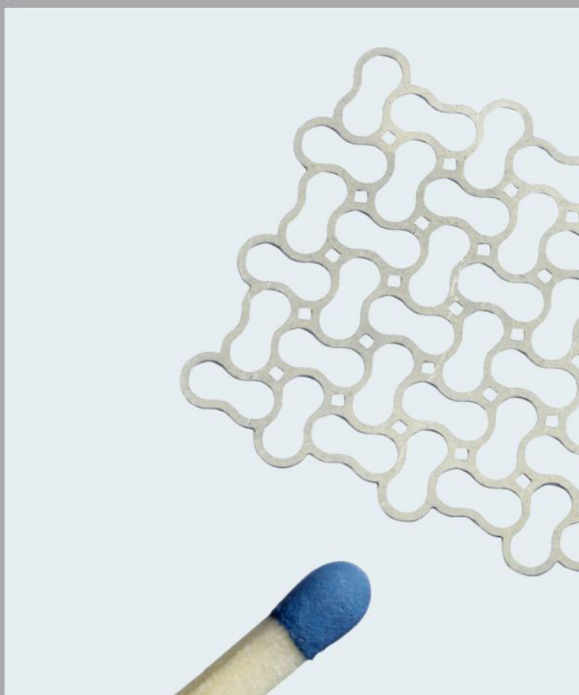
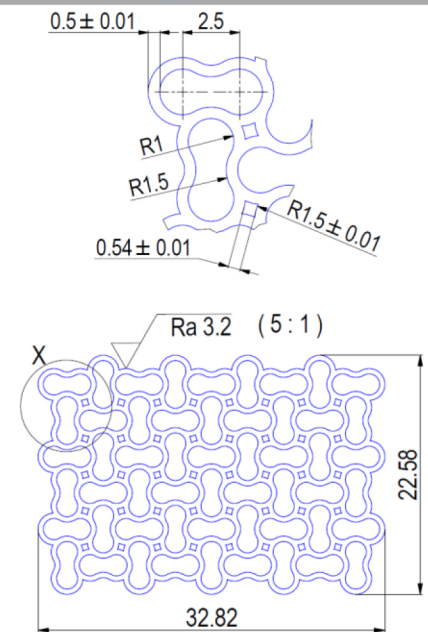


Facts & Figures

- Name: Grade 5 mesh
- Material: Ti1 / 3.7025 titanium
- Material thickness: 0.4 mm
- Kerf: 0.2 mm
- Water pressure: 55,000 psi (3,800 bar)
- Quality grade: Q7
- Feed rate: 195 mm/min.
- Machining time: 15 minutes 39 seconds



Benefits

- Efficient, no starting drill holes necessary
- No micro-cracks
- Material structure on the cutting surface remains unchanged
- No thermal effects, thus tension-free and even
- No risk of fire
- No residues from other metals
- Minimal burr formation
- No post-machining
- No drilling tools required



Alternative

- Etching not possible using titanium. Wire-cut EDM and lasers change the properties of the cutting edges, with negative thermal effects such as burning, changes in colour, micro-cracks etc. Micro-milling not efficient. Wire-cut EDM only possible with starting holes, leading to significant delays.